



## **TOSHIBA SERVER RACK ENCLOSURE**

### **INSTRUCTION MANUAL**



Doc. No.: 99881-002

March 2020



---

## Product Use and Warranty Restrictions

The Toshiba products listed in this document are intended for usage in general electronics applications (computer, personal equipment, office equipment, measuring equipment, industrial robotics, domestic appliances, etc.). These Toshiba products are neither intended nor warranted for usage in equipment where a malfunction or failure may cause loss of human life or bodily injury (Unintended Usage). Unintended Usage includes atomic energy control instruments, airplane or spaceship instruments, transportation instruments, traffic signal instruments, combustion control instruments, life-support equipment, all types of safety devices, etc. Unintended Usage of Toshiba products listed in this document shall be made at the customer's own risk.

### NOTICE

**PLEASE INFORM A TOSHIBA INTERNATIONAL CORPORATION REPRESENTATIVE IN CASE OF INCONSISTENCIES, OMISSIONS, OR QUESTIONS**

The instructions contained in this manual are not intended to cover all of the details or variations in equipment, or to provide for every possible contingency concerning installation, operation, or maintenance. Should further information be required or if problems arise which are not covered sufficiently, contact your Toshiba sales office.

The contents of this instruction manual shall not become a part of or modify any prior or existing agreement, commitment, or relationship. The sales contract contains the entire obligation of Toshiba International Corporation's Power Electronics Division. The warranty contained in the contract between the parties is the sole warranty of Toshiba International Corporation's Power Electronics Division and any statements contained herein do not create new warranties or modify the existing warranty.

**Any mechanical modifications to this equipment without prior written consent of Toshiba International Corporation will void all warranties and may void the UL/CUL listing. Unauthorized modifications can also result in personal injury, death, or destruction of the equipment.**

### QUALIFIED PERSONNEL ONLY

Qualified Personnel are those who have the skills and knowledge relating to the construction, installation, operation, and maintenance of the electrical equipment and have received safety training on the hazards involved (Refer to the latest edition of NFPA 70E for additional safety requirements).

---

## Toshiba Server Rack Enclosure

Please complete the following information and retain for your records.

Model Number: \_\_\_\_\_

Serial Number: \_\_\_\_\_

Application: \_\_\_\_\_

Shipment Date: \_\_\_\_\_

Installation Date: \_\_\_\_\_

Inspected By: \_\_\_\_\_

## Purpose

This manual provides information on how to safely install, operate, and maintain your Toshiba International Corporation product. This manual includes a section of general safety instructions that describes the warning labels and symbols that are used throughout the manual. Read the manual completely before installing, operating, or performing maintenance on this equipment.

This manual and the accompanying drawings should be considered a permanent part of the equipment and should be readily available for reference and review. Dimensions shown in the manual are in metric and/or the English equivalent.

Toshiba International Corporation reserves the right, without prior notice, to update information, make product changes, or to discontinue any product or service identified in this publication.

TOSHIBA is a registered trademark of the Toshiba Corporation. All other product or trade references appearing in this manual are registered trademarks of their respective owners.

**Toshiba International Corporation (TIC) shall not be liable for direct, indirect, special, or consequential damages resulting from the use of the information contained within this manual.**

This manual is copyrighted. No part of this manual may be photocopied or reproduced in any form without the prior written consent of Toshiba International Corporation.

© Copyright 2020 Toshiba International Corporation

All rights reserved.

Printed in the China

---

## Toshiba Customer Support Center

Toshiba's Customer Support Center can be contacted to obtain help in resolving any product problems that you may experience or to provide application information.

### Customer Support Center

8 a.m. to 5 p.m. (CST) – Monday through Friday

Tel: (877) 867-8773

Email: [TIC-UPSService@toshiba.com](mailto:TIC-UPSService@toshiba.com)

You may also contact Toshiba by writing to:

Toshiba International Corporation

Power Electronics Division

13131 West Little York Road

Houston, Texas 77041

Attn: Power Electronic's Division

For further information on Toshiba's products and services, please visit our website at

[www.toshibaups.com](http://www.toshibaups.com)

---

## Table of Contents

|       |  |    |
|-------|--|----|
| 1     | General Safety Instructions .....                | 1  |
| 2     | Important Safety Information .....               | 2  |
| 3     | Unintended Usage .....                           | 3  |
| 4     | Disclaimer .....                                 | 3  |
| 5     | Introduction .....                               | 4  |
| 6     | Product Description .....                        | 4  |
| 7     | Inspection/Storage/Disposal.....                 | 5  |
| 7.1   | Inspection .....                                 | 5  |
| 7.2   | Storage .....                                    | 5  |
| 7.3   | Disposal .....                                   | 5  |
| 8     | Rack Enclosure Installation .....                | 6  |
| 8.1   | Unpacking.....                                   | 6  |
| 8.2   | Moving the Enclosure .....                       | 7  |
| 8.3   | Leveling .....                                   | 7  |
| 8.4   | Ground Connection .....                          | 8  |
| 9     | Enclosure Configuration .....                    | 9  |
| 9.1   | Installing or Removing Front and Rear Doors..... | 9  |
| 9.1.1 | Removing Door.....                               | 9  |
| 9.1.2 | Installing Door .....                            | 9  |
| 9.1.3 | Reversing Front Door.....                        | 9  |
| 9.2   | Removing Side Panels .....                       | 10 |
| 9.3   | Removing/Installing Top Panel .....              | 10 |
| 9.4   | Joining (Baying) Enclosures .....                | 11 |
| 10    | Adjusting Mounting Rails.....                    | 11 |
| 11    | Installing Equipment.....                        | 12 |
| 12    | Installing Cage Nut.....                         | 13 |
| 13    | Specifications .....                             | 14 |
| 14    | Service .....                                    | 15 |

## 1 General Safety Instructions

**WARNING:** **Never** attempt to install, operate, maintain or dispose of this equipment until you have first read and understood all of the relevant product warnings and user directions that are contained in this Instructions Manual.



The **Safety Alert Symbol** indicates that a potential personal injury hazard exists. The symbol is comprised of an equilateral triangle enclosing an exclamation mark.

### Signal Words

Listed below are the signal words that may be used throughout this manual followed by their descriptions and associated symbols. When the words **DANGER**, **WARNING** and **CAUTION** are used in this manual they will be followed by important safety information that must be carefully adhered to.



### **DANGER**

The word **DANGER** preceded by the safety alert symbol indicates that an imminently hazardous situation exists that, if not avoided, will result in death or serious injury to personnel.



### **WARNING**

The word **WARNING** in capital letters preceded by the safety alert symbol indicates that a potentially hazardous situation exists that, if not avoided, could result in death or serious injury to personnel.



### **CAUTION**

The word **CAUTION** in capital letters preceded by the safety alert symbol indicates that a potentially hazardous situation exists which, if not avoided, may result in minor or moderate injury.

### **CAUTION/ATTENTION**

The word **CAUTION** or **ATTENTION** in capital letters without the safety alert symbol indicates a potentially hazardous situation exists which, if not avoided, may result in equipment and property damage.

### Special Symbols

To identify special hazards, other symbols may appear in conjunction with the **DANGER**, **WARNING** and **CAUTION** signal words. These symbols indicate areas that require special and/or strict adherence to the procedures to prevent serious injury to personnel or death.

#### Electrical Hazard Symbol



A symbol which indicates a hazard of injury from electrical shock or burn. It is comprised of an equilateral triangle enclosing a lightning bolt.



---

## 2 Important Safety Information

### SAVE THESE INSTRUCTIONS

This manual contains important instructions that should be followed during installation, maintenance, and operation. Failure to comply will create a risk of personal injury, property damage and/or void the warranty on the equipment.



- The equipment should be installed or serviced by trained service personnel in accordance with the applicable requirements of the National Electrical Code, ANSI/NFPA 70 or Canadian Electrical Code and the applicable sections of ANSI C2, the National Electrical Safety Code.
- At least two people are required to unpack and move the rack.
- The enclosure should be stored in an indoor controlled environment. It should be stored away from direct sunlight, moisture, dust, extreme temperatures, flammable liquid, and conductive contaminants.
- Do not step or place any object on top of the enclosure.
- The enclosures are not stackable. Do not attempt to stack the enclosures.
- The equipment is easily tipped. Use extreme caution when unpacking or moving.
- Ensure that the floor / wall structure is able to withstand the weight of the enclosure while fully loaded.
- Always ensure adequate amount of personnel are present when loading, unloading or moving the enclosure to reduce risk of personal injury or product damage.
- Place heavier equipment towards the bottom of the enclosure to avoid unstable conditions.
- Evenly distribute all mounted loads and equipment to ensure stability within the enclosure system.
- The casters on the enclosure are not designed to provide long-term support. Use the leveling feet to provide long-term support.
- Do not push the enclosure from the side panels to move it. Pushing from the side panels will cause a tipping hazard.
- Ensure the enclosure is fully mounted and secure before installing equipment.
- Leave sufficient space at the front and rear of the enclosure for proper ventilation. Do not block, cover or insert objects into the external ventilation openings of the enclosure.
- Do not re-ship the enclosure with additional equipment installed using the standard pallet and packaging that came with the enclosure.
- Save all packaging for later use. Repackaging and shipping the enclosure without original packaging may cause damages that will void warranty.
- Ensure the enclosure is installed on a flat, level surface for proper operation.

---

## 3 Unintended Usage

The Toshiba products listed in this document are intended for usage in general electronics applications (computer, personal equipment, office equipment, measuring equipment, industrial robotics, domestic appliances, etc.). These Toshiba products are neither intended nor warranted for use in equipment that, if a malfunction or failure occurs, may result in loss of human life or bodily injury (collectively referred to as “Unintended Usage”). Unintended Usage includes atomic energy control instruments, aircraft or spaceship instruments, transportation instruments, traffic signal instruments, combustion control instruments, life support equipment, all types of safety devices, etc. Unintended Usage of Toshiba products listed in this document shall be made at the customer’s own risk.

## 4 Disclaimer

IN NO EVENT WILL TOSHIBA CORPORATION BE RESPONSIBLE OR LIABLE FOR EITHER INDIRECT OR CONSEQUENTIAL DAMAGE OR INJURY THAT MAY COME FROM THE MISUSE OF THIS EQUIPMENT. ANY MODIFICATIONS WITHOUT AUTHORIZATION BY TOSHIBA COULD RESULT IN PERSONAL INJURIES, DEATH OR DESTRUCTION OF THE UPS.

TOSHIBA RESERVES THE RIGHT TO MAKE CHANGES WITHOUT FURTHER NOTICE TO ANY PRODUCTS HEREIN TO IMPROVE RELIABILITY, FUNCTION OR DESIGN. TOSHIBA DOES NOT ASSUME ANY LIABILITY ARISING OUT OF THE APPLICATION OR USE OF ANY PRODUCT OR UPS DESCRIBED HEREIN; NEITHER DOES IT CONVEY ANY LICENSE UNDER ITS PATENT RIGHTS, NOR THE RIGHTS OF OTHERS.

---

## 5 Introduction

Thank you for purchasing the Toshiba Server Rack Enclosure. The information provided in this manual covers the server rack enclosure features along with installation and configuration procedures. Carefully read this instruction manual before installation. Only qualified personnel should conduct these installations.

## 6 Product Description

The Toshiba Server Rack Enclosure is shipped fully assembled for easy deployment. It supports EIA-310 industry-standard 19 inch rackmount hardware and comes in 42U rack height size.

The Toshiba Server Rack Enclosure comes with split side panels for easy removal and rear double doors for easy mounting and maintenance. The front and rear doors are perforated for high ventilation. The enclosure also comes with leveling feet and heavy-duty casters.

### Features Description:

- Weight Capacity: 3307 lbs static load; 2645 lbs rolling load
- Doors can be switched front and back, left and right
- Rear double doors can open over 130° for easy mounting and maintenance
- Perforated doors with high ventilation
- Vertical mounting rails with “U” markings for easy mounting
- Mounting rails with adjustable depths, compatible with all IT equipment
- Easy to install top panel without use of tools.
- Standard heavy duty casters for easy movement of enclosure
- Split side panels, easy to be removed and transported
- Easy and quick enclosure baying
- Two standard cable managers in the rear of the enclosure for easy cable management and PDU installation
- Lockable front/rear doors and side panels

*\*\*More detailed information on the enclosure is located in the specification section.*

## Rack Enclosure



Figure 6.1 – Model# TR1X426110 shown

## 7 Inspection/Storage/Disposal

### 7.1 Inspection

Upon receipt of the rack enclosure, an inspection for shipping damage should be performed prior to unpacking. If damage has occurred during shipping, keep all original packaging material and contact your shipping agent. The warranty does not apply to damage incurred during shipping.

### 7.2 Storage

When the enclosure is not in use, store the enclosure in its original packaging if possible. The enclosure should be stored in an indoor controlled environment. It should be stored away from direct sunlight, moisture, dust, extreme temperatures, flammable liquid, and conductive contaminants.

### 7.3 Disposal

Never dispose of electrical components via incineration. Contact your local state environmental agency for details on disposal of electrical components and packaging in your area.

# 8 Rack Enclosure Installation



## WARNING





The rack enclosure is extremely heavy. Do not attempt to unpack, move or install the enclosure without assistance. Use two or more people to move the enclosure off the pallet. Do NOT push on the center of the doors or side panels. Do NOT attempt to roll the enclosures sideways. Until it has been properly installed and stabilized, the enclosure is prone to tipping and could cause property damage and/or personal injury. Use a forklift or pallet jack to move the enclosure close to its installation location with its original shipping container/packaging. Use the casters on the enclosure for short distance only over smooth, stable surface; it is not intended to be used to roll the enclosure over long distances.

Items Included with the rack enclosure (assembled):

User Guide/Manual

Keys (4 set)

Hardware Kit:

|                                  |   |  |
|----------------------------------|---|--|
| M6x16 mounting screws (40 qty.)  |   |  |
| M6 cage nuts (40 qty.)           |  |  |
| M6 plastic cup washers (40 qty.) |  |  |

Tools Needed (not included):

T-25 Torx Screwdriver (adjusting mounting rail)

T-15 Torx Screwdriver (adjusting PDU/Cable Channel)

T-30 Torx Screwdriver (for door hinges when reversing door)

13-mm socket or wrench (removal of shipping bracket)

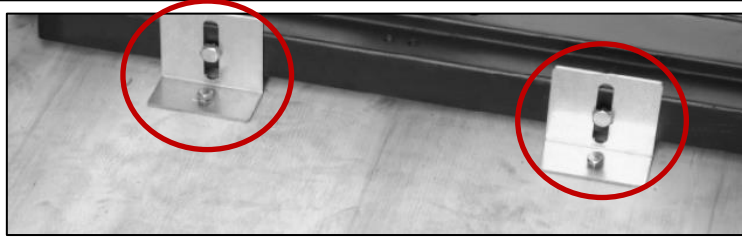
13-mm open end wrench (adjusting leveling feet)

## 8.1 Unpacking



**WARNING:** Use at least two people when unpacking and removing the enclosure from the pallet.

- 1) Ensure the rack enclosure is in upright and stable condition. Remove the plastic wrap by cutting along the corner protectors to avoid scratching the enclosure.
- 2) Remove the packaging material and discard as appropriate. Ensure to keep any packaging material that you plan to reuse.
- 3) Remove the shipping brackets that anchor the enclosure to the pallet. There are a total of 4 brackets (2 in the front and 2 in the rear/back). Use a 13-mm socket or wrench (not provided) to remove the bolts from the bracket. Save the brackets for later use. The brackets can be attached to the enclosure and floor to provide additional stability. Ensure the brackets are tightened until the brackets are flush to the rack.



**Figure 8.1 – Shipping Bracket**

- 4) Use two people to roll and guide the enclosure with casters. Do not attempt to roll the enclosures sideways. Have one person at the front of the enclosure and one person at the rear of the enclosure. Slowly roll the enclosure toward the back of the shipping pallet until the rear casters touch the floor. Slightly tip the front of the enclosure away from the pallet and have the other person remove the pallet away from the enclosure. Carefully set the enclosure on its casters.

## 8.2 Moving the Enclosure

**CAUTION:** To prevent damage to the enclosure and causing a tip hazard, ensure the leveling feet are up before moving the enclosure. Use at least two people when moving the enclosure. Be extremely careful when moving the enclosure. The surface that the enclosure is being moved must be leveled, smooth and stable.

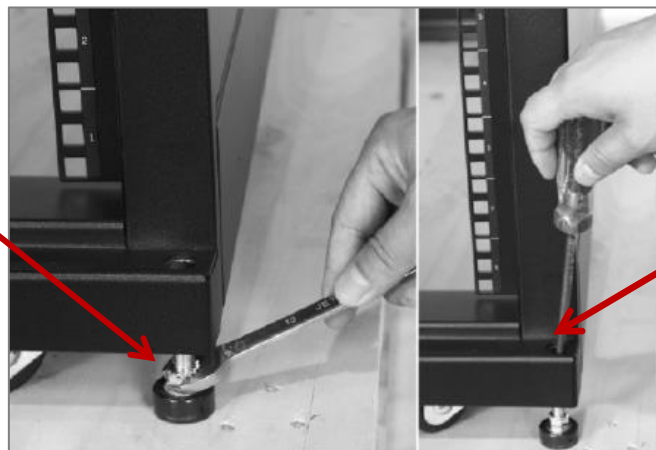
\*\*The enclosure can support 2645 lb dynamic (rolling) load rating.

- 1) Move the enclosure using the casters only for short distances. Do not attempt to move the enclosure using casters for over long distances.
- 2) Slowly push the enclosure from the front or rear. Do not attempt to move the enclosure from the sides or pull the enclosure towards you.

## 8.3 Leveling

**WARNING:** Level the enclosure before attempting to install equipment. The casters are not designed to provide long-term support for the enclosure. Use the levelers to provide long-term support. Install the enclosure in a structurally sound area with a level floor that is able to bear the weight of the enclosure. Adjust the leveling feet until the enclosure is level.

Use a 13mm open-end wrench to adjust the leveling feet.



Use a Phillips head screwdriver to adjust the leveling feet. This method is used when the rack enclosure is empty. Note: This method requires the doors to be removed.

**Figure 8.2 – Leveling Feet**

## 8.4 Ground Connection

- 1) Door, side panel and top cover are grounded to the frame of the enclosure.



Figure 8.3 – Grounding Wire

- 3) Each enclosure should be grounded directly to the building ground using the designated grounding location of the enclosure.

**⚠ WARNING: Attach each enclosure to earth ground separately. Do not use the enclosure without an earth ground connection.**



Figure 8.4 – Rear Threaded Grounding Point (Rear Frame on Bottom)

## 9 Enclosure Configuration

### 9.1 Installing or Removing Front and Rear Doors



**WARNING:** Additional assistance is needed when installing or removing doors.

#### 9.1.1 Removing Door

- 1) Unlock the front door using the key provided and open the door.
- 2) Disconnect the door's ground wire.
- 3) Open the door until it is open at a 90 degrees angle to the front of the enclosure.
- 4) Carefully lift the door upward then outward. Pull the door from the enclosure until the hinge pins on the door are free of the hinges on the enclosure frame.

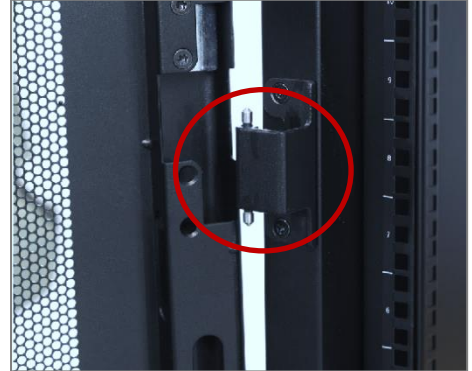


Figure 9.1 – Door Hinge

#### 9.1.2 Installing Door

- 1) Align the door until it is at a 90 degrees angle to the front of the enclosure. Place the door over the hinge pins.
- 2) Carefully lower the door into the enclosure frame making sure that the door hinges are correctly aligned to the enclosure frame hinges.
- 3) The doors self-align on hinge pins when properly installed.
- 4) Re-connect the ground wire.

#### 9.1.3 Reversing Front Door



**WARNING:** Do not attempt to reverse the front door without assistance.

**NOTE:** The front door can be reversed so that the door opens in the other direction. This procedure assumes that initially, when facing the enclosure, the hinges are on the left and the door is opening from right.

- 1) Disconnect the ground wire and remove the screw connecting the ground wire to the inside of the door.
- 2) Remove the door handle by removing the screw-plate behind the handle on the inside of the door.
- 3) Remove the door from the frame. See “Removing Door” on section 7.1 for instructions.
- 4) Locate the upper hinge on the enclosure frame. Use T-30 Torx screwdriver (not included) to remove the hinge by removing the two screws holding the hinge in place. Rotate the hinge 180 degrees and install the hinge onto the other side of the enclosure frame. Repeat this step for the lower hinge.

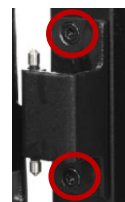


Figure 9.2 – Screw on Door Hinge



- 5) Rotate the door 180 degrees. Remove the hinges from the door, and re-install them to the same location on the opposite side. The hinges on door should now align with the hinges on the enclosure.
- 6) Install the door to the hinges now on the reverse side of the enclosure frame. See "Installing Door" on section 7.2 for instructions. Re-connect the ground wire on the opposite side of door and frame.
- 7) Reinstall the door handle by removing the cam screw, cam washer, and cam. Rotate the cam washer 90 degrees, and the latch 180 degrees. Install the handle on the door.
- 8) Remove and reinstall the Toshiba nameplate.

## 9.2 Removing Side Panels

- 1) Unlock the panel with the key provided.
- 2) Tilt the top of the panel away from the enclosure.
- 3) Lift the panel away from the brace that supports it.



Figure 9.3 – Side Panel

## 9.3 Removing/Installing Top Panel

- 1) Pull the two spring pins on the rear of the enclosure near the top panel.
- 2) While holding the two pins, push the top panel upward.
- 3) Lift the top panel from the enclosure.

\*To re-install the top panel, reverse the steps above.



Figure 9.4 – Top Panel

## 9.4 Joining (Baying) Enclosures

The enclosures may be joined with the provided baying brackets to provide alignment and added stability. The enclosures may be joined with or without the side panels installed. Only same model racks should be joined together.

**! WARNING:** Each enclosures in a bay of joined enclosures requires the same stabilizing measures of a standalone enclosure.

- 1) Arrange the enclosures in the correct position for baying.
- 2) Remove the doors (front and rear) before joining the enclosures. Refer to “Removing Door” on section 7.1.
- 3) Each enclosure includes 4 baying brackets (2 in front, 2 in rear). Bay the enclosures using one M5 x 12 countersunk screw per bracket. Use Phillips head end tool, insert the screw into the designated hole and tighten.



Figure 9.5 – Baying Bracket

## 10 Adjusting Mounting Rails

**! WARNING:** Do NOT adjust rails without assistance. Ensure all equipment are removed prior to adjusting rails. Failure to follow these instructions can result in equipment damage or serious injury.

There are 4 mounting rails (2 rear, 2 front) pre-installed to support equipment with a mounting depth of 27.8 inches (707.6 mm). Do not adjust the mounting rails unless your equipment requires a different mounting depth.



**Figure 10.1 – Mounting Rail**

- 1) Each rail is connected to the enclosure with 6 screws (2 top, 2 middle, 2 bottom)
- 2) Remove the screws fastening each of the mounting rails to the enclosure as required.
- 3) Slide the mounting rails to the desired depth and reattach them using the screws you removed.

\*\*The depth of the 2 PDU/Cable-Management Bracket can be adjusted using the same method.

## 11 Installing Equipment

**⚠ WARNING:** Do NOT install equipment until the enclosure has been stabilized. Install the heaviest equipment first and toward the bottom of the enclosure. Do NOT install from the top of the enclosure. If using sliding rails, be careful when extending the rails. Do NOT extend more than one set of sliding equipment rails at a time. Avoid extending sliding rails near the top of the enclosure. Failure to follow these instructions can result in death, serious injury, or equipment damage.

To install rack-mount equipment in the enclosure:

- 1) Refer to the equipment's manual for installation instructions.
- 2) The square holes at the middle of each rack unit are numbered. A single rack unit includes the space occupied by the numbered hole and the holes directly above and below.



**Figure 11.1 – Rack Unit / Numbered Holes**

## 12 Installing Cage Nut

\*The hardware kit that comes with the enclosure includes the cage nut to use with square holes.

\*Your equipment may also come with mounting hardware. Refer to your equipment's manual for mounting instructions before installing the equipment.

Note: Install cage nuts horizontally, with the ears engaging the sides of the square hole. Do not install cage nuts vertically with the ears engaging the top and bottom of the square hole.



Note: Install the cage nuts on the interior of the vertical mounting rail.

- 1) From the inside of the mounting rail, insert the cage nut into the square hole by hooking one ear of the cage nut assembly. Press it against the side of the square hole.
- 2) Compress the cage nut at the sides slightly to allow the other ear of the cage nut to fit through the square hole. When the cage nut is installed properly, both ears will stick out through the square hole and be visible on the outside of the vertical mounting rail.
- 3) After installing the cage nuts, use the included mounting screws and cup washers to secure the equipment to the mounting rail. Insert the cup washers between the screws and the equipment's mounting bracket.



To Remove: remove any attached screw.

Grasp the cage nut and squeeze the sides to release it from the square hole.

*Note: You may wish to use a cage nut tool (user-supplied) to help with cage nut installation and removal.*

## 13 Specifications

|  |   |
|--|---|
| Physical                               |   |
| Rack Width                             | 19"   |
| Door Perforation                       | 70%   |
| Color                                  | Black   |
| Weight Capacity – Stationary lbs. (kg) | 3307 (1500)   |
| Weight Capacity – Rolling lbs. (kg)    | 2645 (1200)   |
| Front Door                             | 16-gauge steel  |
| Frame                                  | 16-gauge steel  |
| Side Panels                            | 18-gauge steel  |
| Top Panel                              | 18-gauge steel  |
| Mounting Rails                         | 14-gauge steel  |
| Finish                                 | Powder Texture Coating  |
| Certifications                         | UL 2416*  |
| Standards                              | EIA-310   |
| Warranty                               | 5-year limited warranty (see warranty policy for full details, <a href="http://www.toshibaups.com">www.toshibaups.com</a> ) |

\*42U models only

### Enclosure detailed dimensions (Dimensions, IN (MM))

| TIC Part#   | Rack Size | Height Frame Only | Height With Casters | Width With Panels | Depth W/O Doors | Depth With Doors |
|-------------|-----------|-------------------|---------------------|-------------------|-----------------|------------------|
| TR1X426110* | 42U       | 76.9 (1955)       | 78.7 (1999.5)       | 23.6 (600)        | 40.5 (1027.6)   | 43.3 (1100)      |
| TR1X426120* | 42U       | 76.9 (1955)       | 78.7 (1999.5)       | 23.6 (600)        | 44.4 (1127.6)   | 47.2 (1200)      |
| TR1X428110* | 42U       | 76.9 (1955)       | 78.7 (1999.5)       | 31.5 (800)        | 40.5 (1027.6)   | 43.3 (1100)      |
| TR1X428120* | 42U       | 76.9 (1955)       | 78.7 (1999.5)       | 31.5 (800)        | 44.4 (1127.6)   | 47.2 (1200)      |
| TR1X486110  | 48U       | 87.4 (2221.7)     | 89.2 (2266.2)       | 23.6 (600)        | 40.5 (1027.6)   | 43.3 (1100)      |
| TR1X486120  | 48U       | 87.4 (2221.7)     | 89.2 (2266.2)       | 23.6 (600)        | 44.4 (1127.6)   | 47.2 (1200)      |
| TR1X488110  | 48U       | 87.4 (2221.7)     | 89.2 (2266.2)       | 31.5 (800)        | 40.5 (1027.6)   | 43.3 (1100)      |
| TR1X488120  | 48U       | 87.4 (2221.7)     | 89.2 (2266.2)       | 31.5 (800)        | 44.4 (1127.6)   | 47.2 (1200)      |

\*42U Models are UL 2416 certified.

### Enclosure Weight, Shipping DIM & Weight

| TIC Part#   | Unit Weight (lbs) | Shipping Weight (lbs) | Shipping DIM (in.)<br>H x W x D |
|-------------|-------------------|-----------------------|---------------------------------|
| TR1X426110  | 230               | 280                   | 83.9 x 26 x 45.7                |
| TR1X426120  | 250               | 285                   | 83.9 x 26 x 49.6                |
| TR1X428110  | 305               | 347                   | 83.9 x 33.9 x 45.7              |
| TR1X428120  | 332               | 378                   | 83.9 x 33.9 x 49.6              |
| TR1X486110* | 262               | 298                   | 94.3 x 26 x 45.7                |
| TR1X486120* | 285               | 325                   | 94.3 x 26 x 49.6                |
| TR1X488110* | 347               | 395                   | 94.3 x 33.9 x 45.7              |
| TR1X488120* | 378               | 430                   | 94.3 x 33.9 x 49.6              |

### Minimum/Maximum Mounting Depth

| Models                                  | 1100mm depth       | 1200mm depth        |
|---|--------------------|---------------------|
| Minimum Depth                           | 190.82mm (7.51in)  | 190.82mm (7.51in)   |
| Maximum Depth w/ PDU Channel Installed  | 803.57mm (31.64in) | 903.57mm (35.57in)  |
| Maximum Depth w/o PDU Channel Installed | 943.27mm (37.14in) | 1043.27mm (41.07in) |

---

## 14 Service

***If the enclosure requires repair, do not return it to the distributor/reseller. Follow these steps:***

- Reference the instructions manual to see if it can resolve the issue or problem. If issue persists, contact Toshiba International Corporations support group for further assistance. See Contact Customer Support section for contact numbers or visit [www.toshibaups.com](http://www.toshibaups.com).
  - Note the model number and serial number and the date of purchase. The model and serial numbers are located on the rear of the enclosure.
  - If the enclosure is under warranty, the repair or replacement is free.
- If it is determined that the enclosure is under warranty and needs to be repaired or replaced, please submit a Return Authorization (RA) Form from [www.toshibaups.com](http://www.toshibaups.com). A Return Authorization representative will provide an RA# with instructions to allow the enclosure to be returned for repair or replacement. All returns must have an RA#.

## INSTRUCTIONS DE SÉCURITÉS IMPORTANTES

### CONSERVER CES INSTRUCTIONS

Ce manuel contient des instructions importantes qui doivent être suivies pendant l'installation et l'utilisation.

- L'équipement doit être installé ou entretenu par des personnels d'entretien qualifiés conformément aux exigences applicables du Code national de l'électricité, ANSI / NFPA 70 ou du Code canadien de l'électricité et des sections applicables de ANSI C2, le National Electrical.
- Au moins deux personnes doivent déballer et déplacer le rack.
- Le l'armoire doit être stockée dans un environnement contrôlé à l'intérieur. Il doit être conservé à l'abri de la lumière directe du soleil, de l'humidité, de la poussière, des températures extrêmes, des liquides inflammables et des contaminants
- Ne pas déplacer ou placez des objets sur le l'armoire.
- Les l'armoire ne sont pas empilables. N'essayez pas d'empiler les l'armoire.
- L'équipement est facilement basculé. Soyez extrêmement prudent lorsque vous déballez ou déplacez.
- Assurez-vous que la structure de plancher / mur est capable de supporter le poids de l'armoire à pleine charge.
- Assurez-vous toujours qu'une quantité suffisante de personnel est présente lors du chargement, du déchargement ou du déplacement du boîtier afin de réduire les risques de blessures ou de dommages au produit.
- Placer l'équipement le plus lourd vers le bas de l'enceinte pour éviter les conditions instables.
- Répartissez uniformément toutes les charges et tous les équipements montés pour assurer la stabilité dans le système d'enceinte.
- Les roulettes du l'armoire ne sont pas conçues pour fournir un support à long terme. Utilisez les pieds de nivellement pour fournir un soutien à long terme.
- Ne poussez pas le boîtier des panneaux latéraux pour le déplacer. En poussant sur les panneaux latéraux, vous risquez de basculer.
- Assurez-vous que le boîtier est entièrement monté et sécurisé avant d'installer l'équipement.
- Laissez suffisamment d'espace à l'avant et à l'arrière du boîtier pour assurer une ventilation adéquate. Ne pas bloquer, couvrir ou insérer des objets dans les ouvertures de ventilation externes du boîtier.
- Ne pas réexpédier le boîtier avec un équipement supplémentaire installé à l'aide de la palette standard et de l'emballage fournis avec le boîtier.
- Conservez tous les emballages pour une utilisation ultérieure. Le remballage et l'expédition de l'enceinte sans emballage d'origine peuvent entraîner des dommages qui annuleront la garantie.
- Assurez-vous que le boîtier est installé sur une surface plate et plane pour un fonctionnement correct.





# TOSHIBA

**TOSHIBA INTERNATIONAL CORPORATION**

**SOCIAL INFRASTRUCTURE SYSTEMS GROUP**

**POWER ELECTRONICS DIVISION**

13131 West Little York Rd., Houston, TX 77041

Tel: 855-803-7087 Fax 713-896-5212

US 800-231-1412 Canada 800-872-2192 Mexico 01-800-527-1204

[www.toshibaups.com](http://www.toshibaups.com)

Printed in China